

Danny Ties™

Unique tube holder with quilted design minimizes irritation and stabilizes trach

Danny Ties are unique tracheostomy tube holders with a softer and more comfortable fit around the neck for patients of all ages. The patient with a tracheostomy needs to have a tube holder that securely holds the artificial airway in place to prevent accidental decannulation. As important, the tube holder needs to provide a soft, comfortable fit about the neck while minimizing skin irritation under the collar. Danny Ties are made of soft, absorbent cotton that lays smooth at the edges of the collar, minimizes skin irritation and reduces skin breakdown under the collar. The patent-pending design of the Danny Ties evenly distributes the quilted collar around the neck to minimize pressure points on the skin.

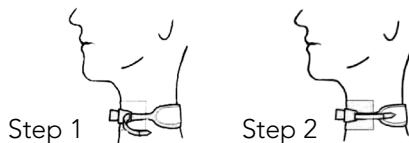
Danny Ties are easy to apply with tapered ends on the collar straps. The ends thread easily through the eyelets of the tracheostomy tube, allowing for quick application and changes of the collar position on the smallest of infants and the largest adult patient. The collar is engineered to hold its shape—not fold in half around the neck when the patient turns—and does not stretch when it absorbs moisture. If soiled, Danny Ties may be washed, dried and reused for the same patient per institutional policy.

The Sil.Flex™ Stoma Pad and the Sil.Flex TC Pad may be used in combination with the Danny Ties to provide a secure fit of tracheostomy tube.

Danny Ties are developed with special care by a dad wanting to “make a difference” for his son and change the quality of life for all tracheostomy patients. His engineering expertise and commitment to finding a better solution is found in the Danny Ties.

Sizing and Fitting Guidelines

Product Code	Size	Fits Neck
DWL105001	Small	6–10"
DWL105002	Medium	9–20"
DWL105003	Large	19–25"



Ordering Information

DWL105001	Danny Ties, Small (100/case)
DWL105001B	Danny Ties, Small (10/box)
DWL105002	Danny Ties, Medium (100/case)
DWL105002B	Danny Ties, Medium (10/box)
DWL105003	Danny Ties, Large (100/case)
DWL105003B	Danny Ties, Large (10/box)

Companion Products

SP00	Sil.Flex Stoma Pad, Size 0
SP01	Sil.Flex Stoma Pad, Size 1
SP02	Sil.Flex Stoma Pad, Size 2
SP03	Sil.Flex Stoma Pad, Size 3
DP00	Sil.Flex TC Pad, 5 mm
DP01	Sil.Flex TC Pad, 10 mm



310 Twin Oaks Valley Road • Suite 107-366
San Marcos, CA 92078 • 760 560 3555



FEATURES

Danny Ties stabilize the tracheostomy tube against the trachea with one piece design.

Quilted collar provides a softer, more comfortable fit about the neck

Unique tapered straps easily thread the ties through the tracheostomy flange

Absorbent cotton collar helps minimize irritation and reduces skin breakdown around the neck

Cotton material absorbs moisture and wicks away from the patient

Reinforced stitching at the ends of the tie strap to ensure ease of threading and repositioning of the collar

Available in three sizes to accommodate small infants through adults

Single patient use item and may be reprocessed per institutional policy

Danny Ties may be gently washed, dried and reused for the same patient

Packaged five Danny Ties per pack in environmentally friendly packaging